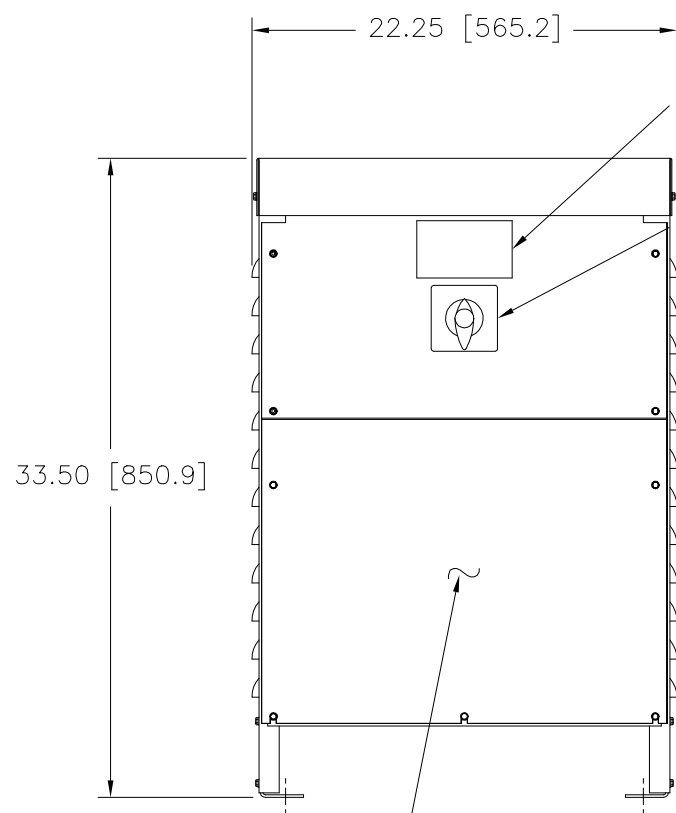


.56 [14.3] DIA. HOLE  
 4 PLACES ON BOTTOM  
 FLANGES FOR CUSTOMER  
 MOUNTING

BYPASS SWITCH: WHEN THIS SWITCH IS PLACED IN THE "BYPASS" POSITION, THE INCOMING LINE IS CONNECTED DIRECTLY TO THE OUTGOING LINE AND THE REGULATOR IS REMOVED FROM THE CIRCUIT. IN THE "NORMAL" POSITION, THE REGULATOR WILL CORRECT FOR HIGH OR LOW SUPPLY LINE VOLTAGES WHILE MAINTAINING A CONSTANT PRESET OUTPUT VOLTAGE.

**WARNING !**  
 DO NOT OPERATE THE SWITCH UNDER LOAD OR THE SWITCH MAY BE DAMAGED.

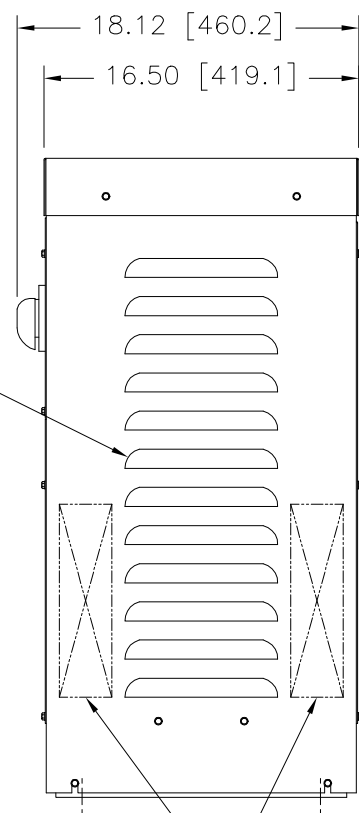


NAMEPLATE

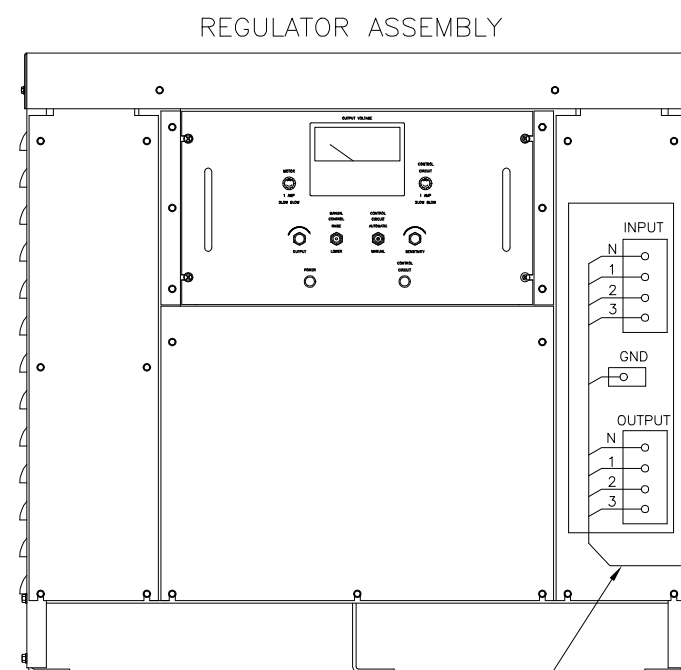
BYPASS SWITCH

LOUVER VENTS  
 BOTH SIDES

ACCESS PANEL  
 TO TERMINALS



RECOMMENDED AREAS  
 FOR CONDUIT ENTRY

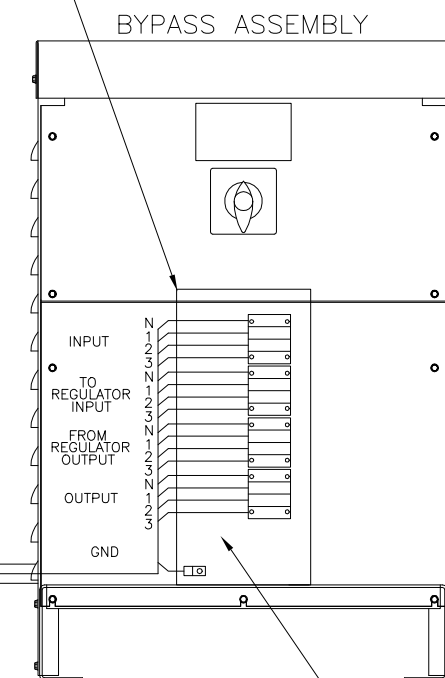


CONNECTIONS TO BE  
 MADE AT INSTALLATION

CONDUIT

NO SCALE

CONNECTIONS PRE-WIRED  
 TO BYPASS SWITCH AND  
 INPUT/OUTPUT BLOCKS



CUSTOMER CONNECTIONS

WIRE RANGES FOR CUSTOMER WIRING

INPUT/OUTPUT/NEUTRAL TERMINALS: (1)(#2 - #14 AWG) COMPRESSION PER PHASE

TO/FROM/NEUTRAL REGULATOR TERMINALS: (1)(#2 - #14 AWG) COMPRESSION PER PHASE

GROUND TERMINAL: (1)(#2 - #14 AWG) COMPRESSION

| BYPASS SWITCH RATINGS  |                              |  |                                      |
|--|------------------------------|--|--------------------------------------|
| THREE PHASE WIRING   | 50/60 HERTZ                  | 600 VOLTS  | 100 AMPS                             |
| <small>UNLESS OTHERWISE SPECIFIED, TOLERANCE IS ±<br/>           DECIMALS HOLES .12 .002 ANGLES DRAFT 1° 1-1/2°<br/>           XX .005 XXX .005</small>  |                              |  |                                      |
| <small>MATERIAL:</small>   |                              | <small>UNITS IN [mm]</small>   |                                      |
| <small>ALL DIMENSIONS APPLY AFTER PLATING</small>  |                              |  |                                      |
| <small>THE INFORMATION AND DESIGN DISCLOSED HEREIN WAS ORIGINATED BY AND IS THE PROPERTY OF STACO ENERGY PRODUCTS CO., WHICH RESERVES ALL PATENT, PROPRIETARY, DESIGN, MANUFACTURING, REPRODUCTION, USE AND SALE RIGHTS THEREIN, AND TO ANY ARTICLE DISCLOSED THEREIN EXCEPT TO THE EXTENT RIGHTS ARE EXPRESSLY GRANTED TO OTHERS. THE FOREGOING DOES NOT APPLY TO VENDOR PROPRIETARY PARTS.</small> |                              |  |                                      |
| <small>TITLE: SPEC. CONTROL DRAWING MAINT. BYPASS SWITCH TYPE: BMB-T100</small>  |                              | <small>STACO ENERGY PRODUCTS CO. A COMPONENTS CORPORATION OF AMERICA COMPANY DAYTON, OHIO U.S.A.</small> |                                      |
| <small>DRAWN BY SHORE</small>  | <small>DATE 12/02/99</small> | <small>FIRST USED ON</small>   | <small>DO NOT SCALE DWG.</small>     |
| <small>CHECKER</small>   | <small>DATE</small>          | <small>WEIGHT APPROX.</small>  | <small>CODE IDENT. NO. 83008</small> |
| <small>ENGINEER</small>  | <small>DATE</small>          | <small>SCALE .2=1</small>  | <small>DWG. NO. 810-0050</small>     |
| <small>SHEET 1 OF 1</small>  |                              | <small>DWG. NO. 810-0050</small>   |                                      |