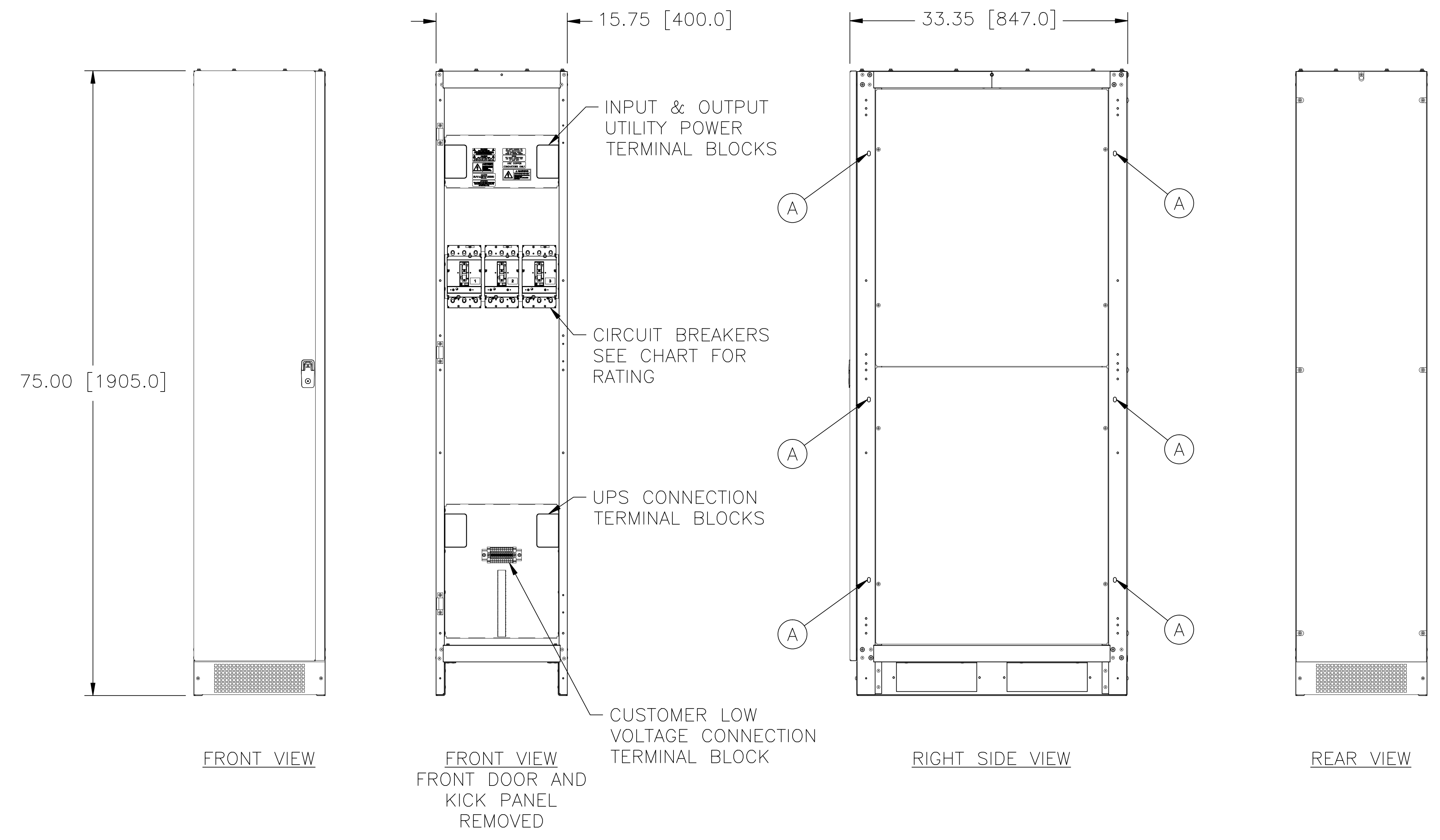


- INSTRUCTIONS TO MOUNT FLU-P-125-MPBS CABINET TO UPS:
1. REMOVE LEFT SIDE PANEL OF UPS AND SAVE HARDWARE.
 2. BUTT RIGHT SIDE OF FLU-P-125-MPBS CABINET UP AGAINST THE LEFT SIDE OF THE UPS.
 3. BOLT THE CABINETS TOGETHER AT (6) LOCATIONS WITH THE SUPPLIED 5/16 HARDWARE THRU THE SLOTS NOTED AS "A" BELOW.
 4. MOUNT LEFT SIDE PANEL OF UPS ON THE LEFT SIDE OF THE FLU-P-125-MPBS CABINET USING THE HARDWARE FROM THE UPS.



SUMMARY OF EQUIPMENT
 THE FIRSTLINE P MAINTENANCE BYPASS SWITCH IS A STEEL ENCLOSURE DESIGNED TO BE USED IN CONJUNCTION WITH THE FIRSTLINE P UNINTERRUPTIBLE POWER SUPPLY (UPS). THE ENCLOSURE HAS REMOVABLE TOP, BOTTOM, REAR AND SIDE PANELS TO FACILITATE WIRING AND IS STYLED TO MATCH THE UPS.

ENVIRONMENTAL
 OPERATING TEMPERATURE: 0°C TO 40°C
 ALTITUDE: 0-3300 FEET [1000 METERS] (WITHOUT DERATING)
 RELATIVE HUMIDITY: 0-95%, NON-CONDENSING

SERVICE CLEARANCE
 FROM FRONT OF CABINET: 36.00 [914.4]

POWER TERMINAL CONNECTIONS:
 COMPRESSION LUGS
 350 KCMIL - #6 AWG WIRE EACH PHASE

SPECIFICATIONS				
MODEL NUMBER	MAX. KVA	INPUT VOLTAGE 60 HZ	OUTPUT VOLTAGE 60 HZ	CIRCUIT BREAKERS RATING (AMPS)
FLU-P-80-MBPS	80	480Y/277	480Y/277	150
FLU-P-100-MBPS	100	480Y/277	480Y/277	175
FLU-P-125-MBPS	125	480Y/277	480Y/277	200

UNLESS OTHERWISE SPECIFIED, TOLERANCE IS # DECIMALS HOLES ANGLES DRAFT XX .010 .005 15° 1-1/2" .XXX .005

UNITS IN [mm]

MATERIAL: ALL DIMENSIONS APPLY AFTER PLATING

TITLE: SPEC. CONTROL DRAWING FIRSTLINE P MAINT. BYPASS SWITCH

DRAWN BY: S.A. SMITH DATE: 2/24/11 FIRST USED ON: DO NOT SCALE DWG.

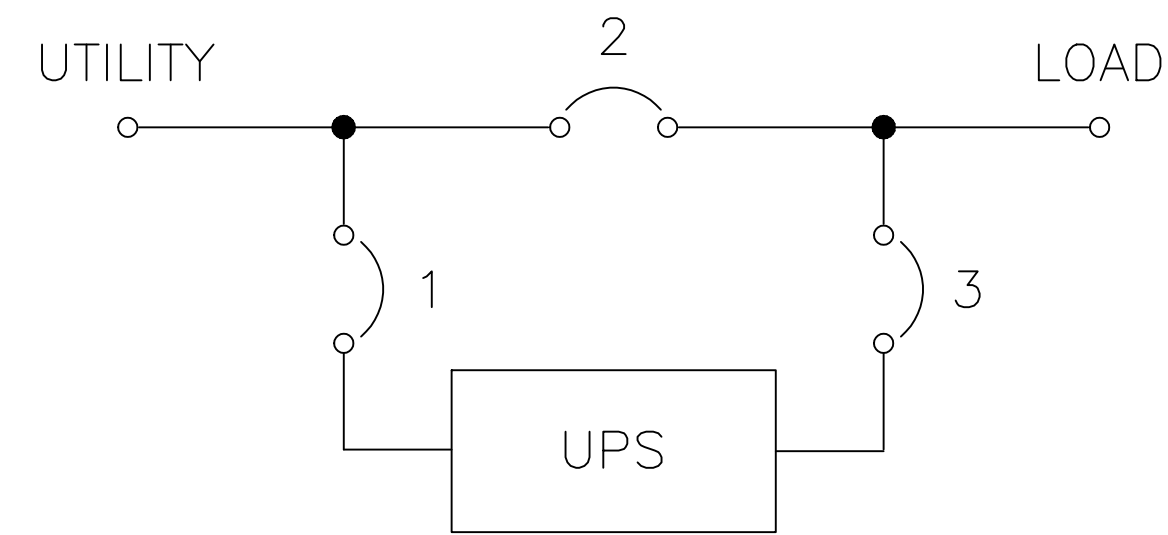
CHECKER: SAS DATE: 5/12/11 WEIGHT APPROX.: CAGE CODE: 83008

ENGINEER: R. BAKER DATE: 6/10/11 SCALE: 1/8 SHEET 1 OF 1

The information and design disclosed herein was originated by and is the property of STACO ENERGY PRODUCTS CO., which reserves all patent, proprietary, design, manufacturing, reproduction, use and sale rights therein, and to any article disclosed therein except to the extent rights are expressly granted to others. The foregoing does not apply to vendor proprietary parts.

STACO ENERGY PRODUCTS CO.
 A Channivesta Corporation of America Company
 301 Geddes Boulevard Dayton, Ohio 45403 USA

DWG. NO. 092-7033



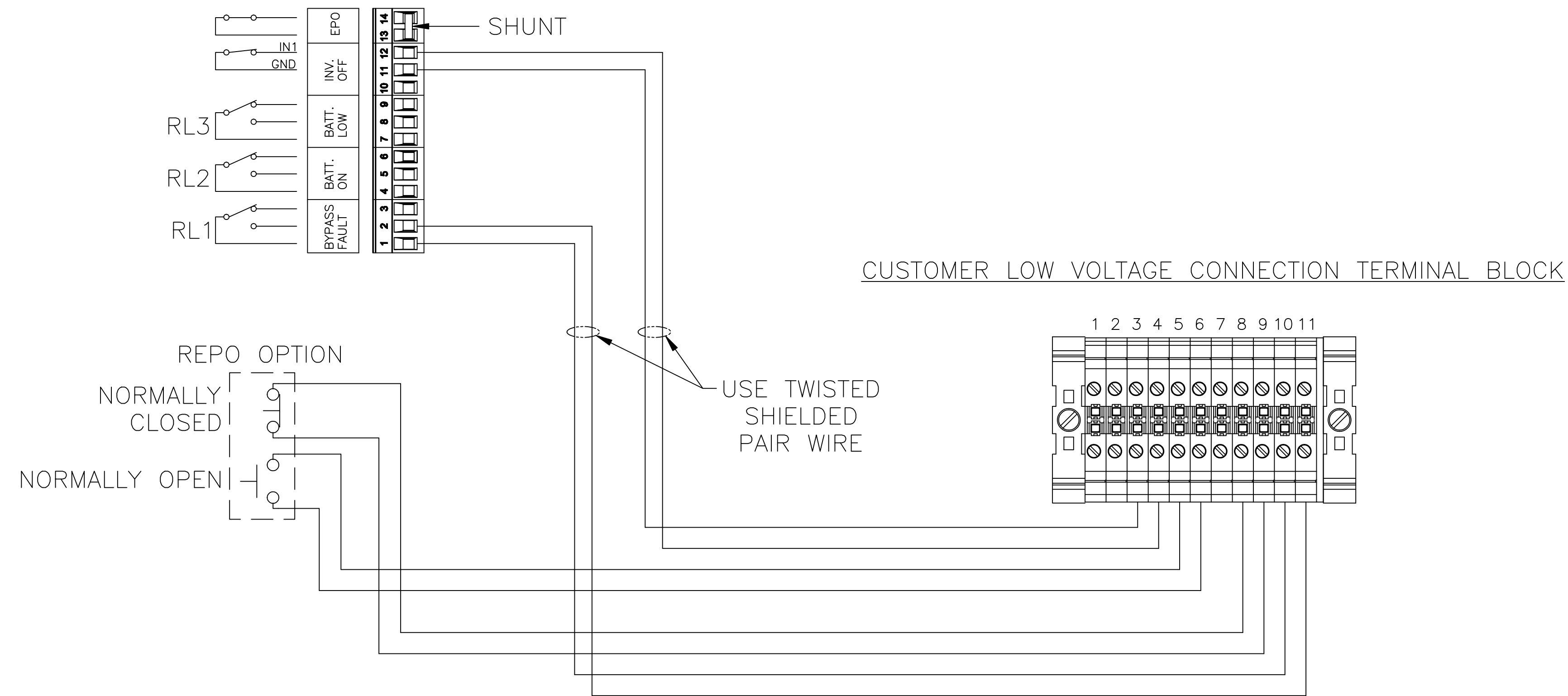
TO PLACE LOAD ON MAINTENANCE BYPASS:

1. REFERENCE THE UPS USER'S HANDBOOK – MANUAL TRANSFER TO BYPASS. PLACE UPS IN BYPASS.
2. VERIFY THE UPS IS IN BYPASS BY OBSERVING THE INDICATOR LIGHTS ON THE UPS FRONT DISPLAY.
3. SET CIRCUIT BREAKER 2 TO THE CLOSED/ON POSITION.
4. SET CIRCUIT BREAKER 3 TO THE OPEN/OFF POSITION.
5. TURN OFF THE UPS.
6. SET CIRCUIT BREAKER 1 TO THE OPEN/OFF POSITION.
7. THE LOAD IS NOW CONNECTED TO THE UTILITY AND THE UPS CAN BE SAFELY SERVICED. FOLLOW ALL WARNINGS AND PRECAUTIONS IN THE UPS USER'S HANDBOOK.

TO PLACE LOAD ON UPS:

1. SET CIRCUIT BREAKER 1 TO THE CLOSED/ON POSITION.
2. START THE UPS AS INSTRUCTED IN THE UPS USER'S HANDBOOK.
3. PLACE THE UPS IN MANUAL TRANSFER TO BYPASS, AS INSTRUCTED IN THE UPS USER'S HANDBOOK.
4. SET CIRCUIT BREAKER 3 TO THE CLOSED/ON POSITION.
5. SET CIRCUIT BREAKER 2 TO THE OPEN/OFF POSITION.
6. PLACE THE UPS IN MANUAL TRANSFER TO INVERTER, AS INSTRUCTED IN THE UPS USER'S HANDBOOK.
7. VERIFY ALL LIGHTS ON THE UPS FRONT DISPLAY ARE CORRECT.

REMOTE COMMANDS AND ALARMS CONNECTIONS ON FRONT OF UPS BEHIND DOOR



UNLESS OTHERWISE SPECIFIED, TOLERANCE IS #		UNITS		TITLE: SPEC. CONTROL DRAWING	
DECIMALS	HOLE	ANGLES	DRAFT	FIRSTLINE P	
.XX .010	.005	1°	1-1/2°	MAINT. BYPASS SWITCH	
.XXX .005				DRAWN BY: S.A. SMITH	
MATERIAL:		ALL DIMENSIONS APPLY AFTER PLATING		DATE: 2/24/11	FIRST USED ON:
The information and design disclosed herein was originated by and is the property of STACO ENERGY PRODUCTS CO., which reserves all patent, proprietary, design, manufacturing, reproduction, use and sale rights therein, and to any article disclosed therein except to the extent rights are expressly granted to others. The foregoing does not apply to vendor proprietary parts.		CHECKER: SAS	DATE: 5/12/11	WEIGHT APPROX.:	CAGE CODE: 83008
		ENGINEER: R. BAKER	DATE: 6/10/11	SCALE: 1/4	SHEET 2 OF 2
		DWG. NO. 092-7033		DWG. SIZE D	

