

- INSTRUCTIONS TO MOUNT TRANSFORMER CABINET TO UPS:
1. REMOVE LEFT SIDE PANEL OF UPS AND SAVE HARDWARE.
  2. BUTT RIGHT SIDE OF TRANSFORMER CABINET UP AGAINST THE LEFT SIDE OF THE UPS.
  3. BOLT THE CABINETS TOGETHER AT (6) LOCATIONS WITH THE SUPPLIED 5/16 HARDWARE THRU THE SLOTS NOTED AS "A" BELOW.
  4. MOUNT LEFT SIDE PANEL OF UPS ON THE LEFT SIDE OF THE TRANSFORMER CABINET USING THE HARDWARE FROM THE UPS.
  5. IF MOUNTING CABINET SEPARATELY ORDER WITH 904-0258 SIDE PANEL KIT.

SUMMARY OF EQUIPMENT  
 THE FIRSTLINE P TRANSFORMER CABINET IS A STEEL ENCLOSURE DESIGNED TO BE USED IN CONJUNCTION WITH THE FIRSTLINE P UNINTERRUPTIBLE POWER SUPPLY (UPS). THE ENCLOSURE HAS REMOVABLE TOP, BOTTOM, REAR AND SIDE PANELS TO FACILITATE WIRING AND IS STYLED TO MATCH THE UPS. THE CABINET CONSIST NOT ONLY OF TRANSFORMERS BUT ALSO A CIRCUIT BREAKER FOR EACH TRANSFORMER OR OPTIONALLY A COMPLETE SET OF MAINTENANCE BYPASS SWITCH BREAKERS.

ENVIRONMENTAL  
 OPERATING TEMPERATURE: 0°C TO 40°C  
 ALTITUDE: 0-3300 FEET [1000 METERS] (WITHOUT DERATING)  
 RELATIVE HUMIDITY: 0-95%, NON-CONDENSING

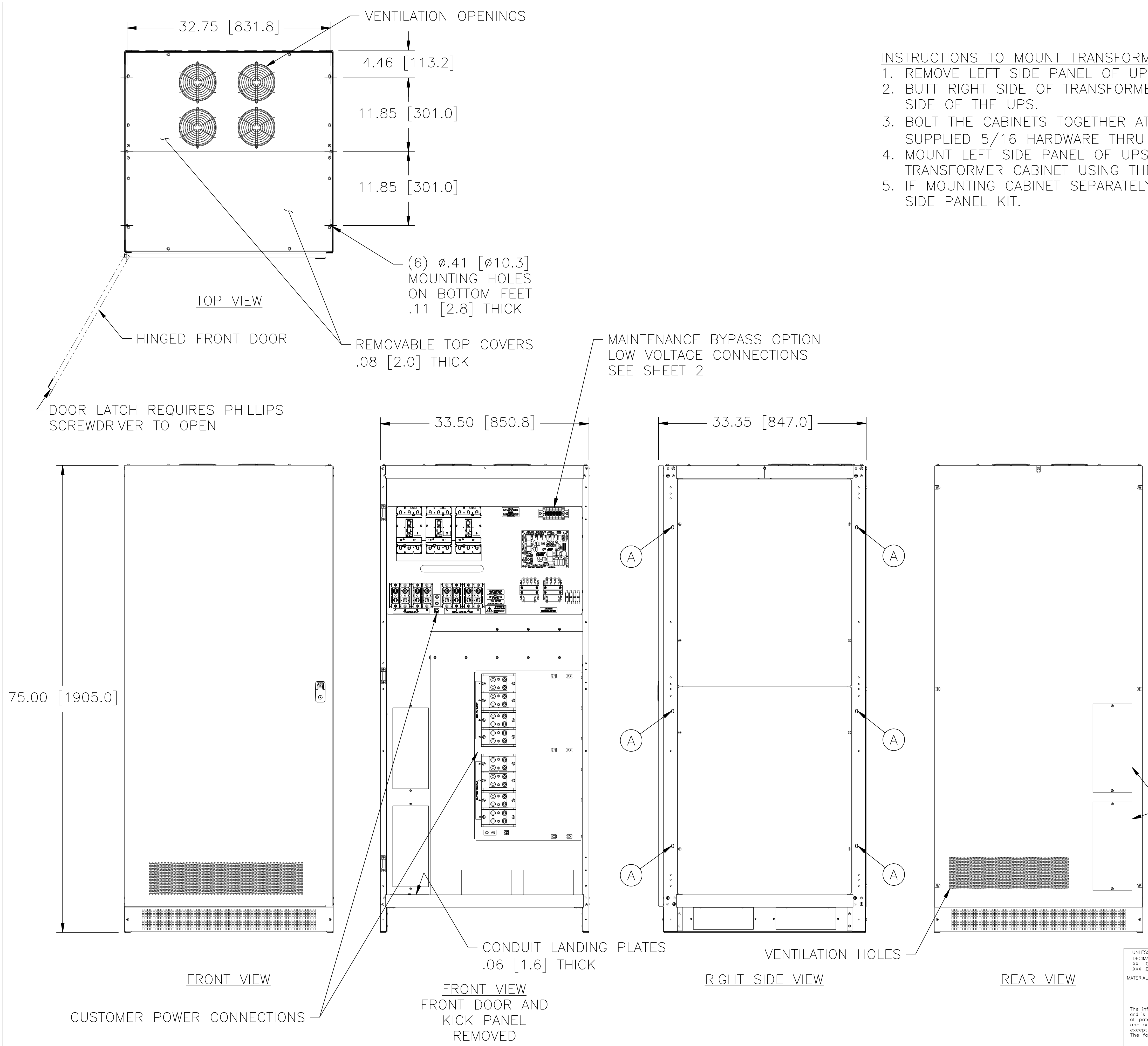
SERVICE CLEARANCE  
 FROM FRONT OF CABINET: 36.00 [914.4]

UTILITY INPUT AND OUTPUT LOAD TERMINAL CONNECTIONS:  
 COMPRESSION LUGS  
 (2) 500 KCMIL - #4 AWG WIRES EACH PHASE

UPS TERMINAL CONNECTIONS:  
 COMPRESSION LUGS  
 350 KCMIL - #6 AWG WIRES EACH PHASE

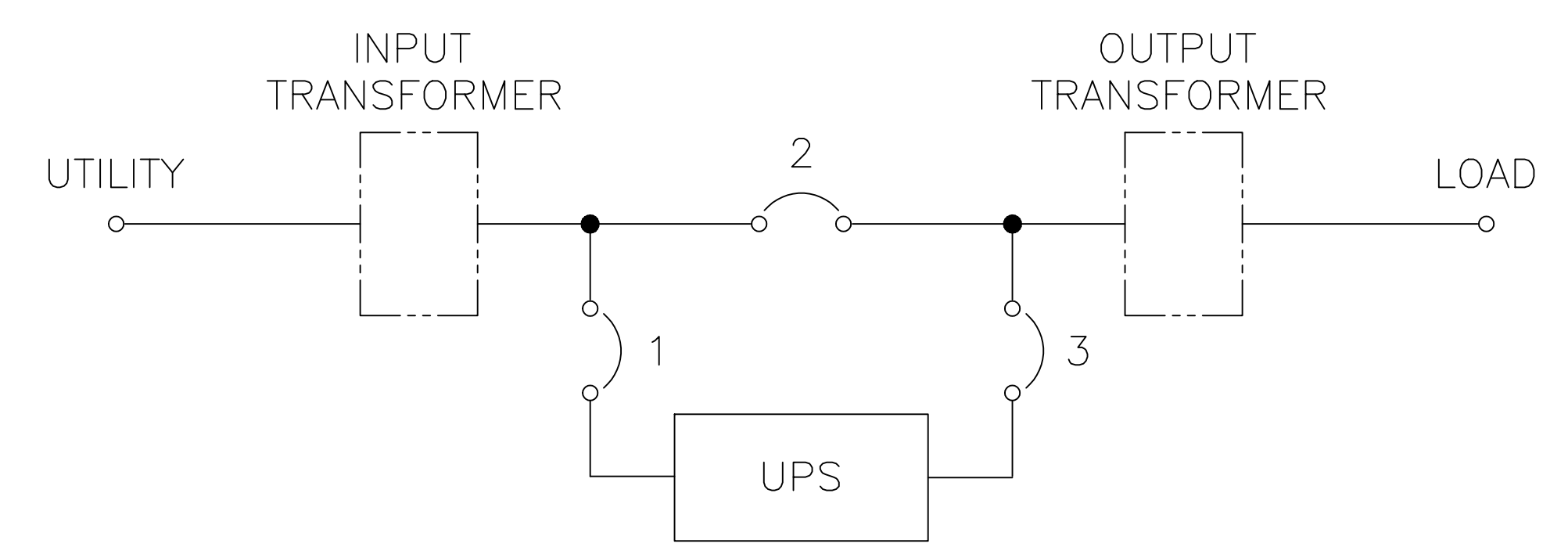
UL LISTED TO UL 1778, FILE NO.: E191175

CONDUIT LANDING PLATES  
 .06 [1.6] THICK



UNLESS OTHERWISE SPECIFIED, TOLERANCE IS #		UNITS		TITLE: SPEC. CONTROL DRAWING	
DECIMALS	HOLE	ANGLES	DRAFT	FIRST LINE P	
.XX .010	.005	1°	1-1/2°	TRANSFORMER CABINET	
.XXX .005				DRAWN BY: S.A. SMITH	
MATERIAL:				DATE: 3/16/11	FIRST USED ON:
ALL DIMENSIONS APPLY AFTER PLATING				CHECKER: SAS	DATE: 6/10/11
The information and design disclosed herein was originated by and is the property of STACO ENERGY PRODUCTS CO., which reserves all patent, proprietary, design, manufacturing, reproduction, use and sale rights therein, and to any article disclosed therein except to the extent rights are expressly granted to others. The foregoing does not apply to vendor proprietary parts.				ENGINEER: R. BAKER	DATE: 6/10/11
DO NOT SCALE DWG.		WEIGHT APPROX.	CAGE CODE	DWG. NO.	
83008		1/8	83008	092-7035	
SHEET 1 OF 2					





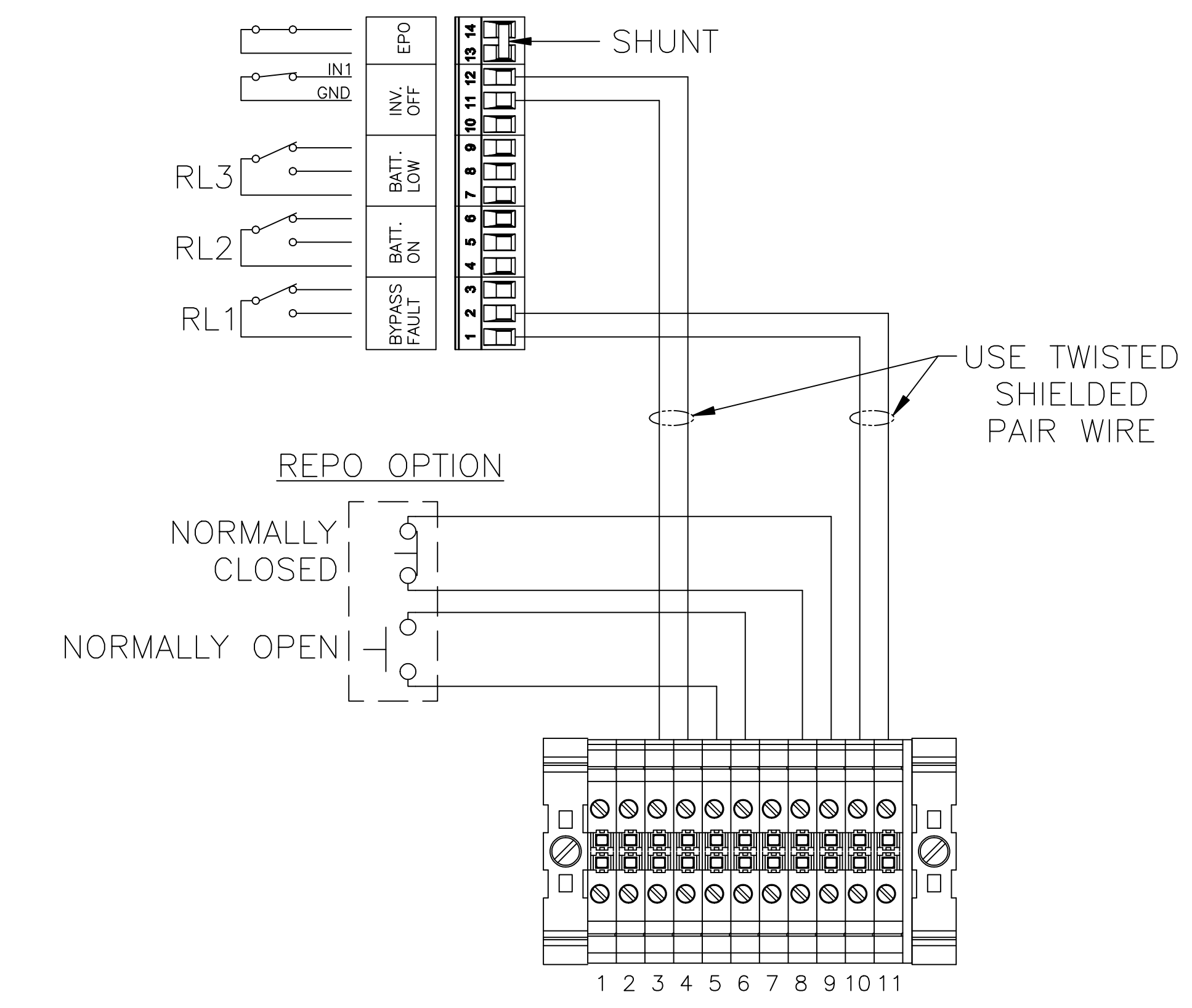
TO PLACE LOAD ON MAINTENANCE BYPASS:

1. REFERENCE THE UPS USER'S HANDBOOK – MANUAL TRANSFER TO BYPASS. PLACE UPS IN BYPASS.
2. VERIFY THE UPS IS IN BYPASS BY OBSERVING THE INDICATOR LIGHTS ON THE UPS FRONT DISPLAY.
3. SET CIRCUIT BREAKER 2 TO THE CLOSED/ON POSITION.
4. SET CIRCUIT BREAKER 3 TO THE OPEN/OFF POSITION.
5. TURN OFF THE UPS.
6. SET CIRCUIT BREAKER 1 TO THE OPEN/OFF POSITION.
7. THE LOAD IS NOW CONNECTED TO THE UTILITY AND THE UPS CAN BE SAFELY SERVICED. FOLLOW ALL WARNINGS AND PRECAUTIONS IN THE UPS USER'S HANDBOOK.

TO PLACE LOAD ON UPS:

1. SET CIRCUIT BREAKER 1 TO THE CLOSED/ON POSITION.
2. START THE UPS AS INSTRUCTED IN THE UPS USER'S HANDBOOK.
3. PLACE THE UPS IN MANUAL TRANSFER TO BYPASS, AS INSTRUCTED IN THE UPS USER'S HANDBOOK.
4. SET CIRCUIT BREAKER 3 TO THE CLOSED/ON POSITION.
5. SET CIRCUIT BREAKER 2 TO THE OPEN/OFF POSITION.
6. PLACE THE UPS IN MANUAL TRANSFER TO INVERTER, AS INSTRUCTED IN THE UPS USER'S HANDBOOK.
7. VERIFY ALL LIGHTS ON THE UPS FRONT DISPLAY ARE CORRECT.

REMOTE COMMANDS AND ALARMS CONNECTIONS ON FRONT OF UPS BEHIND DOOR

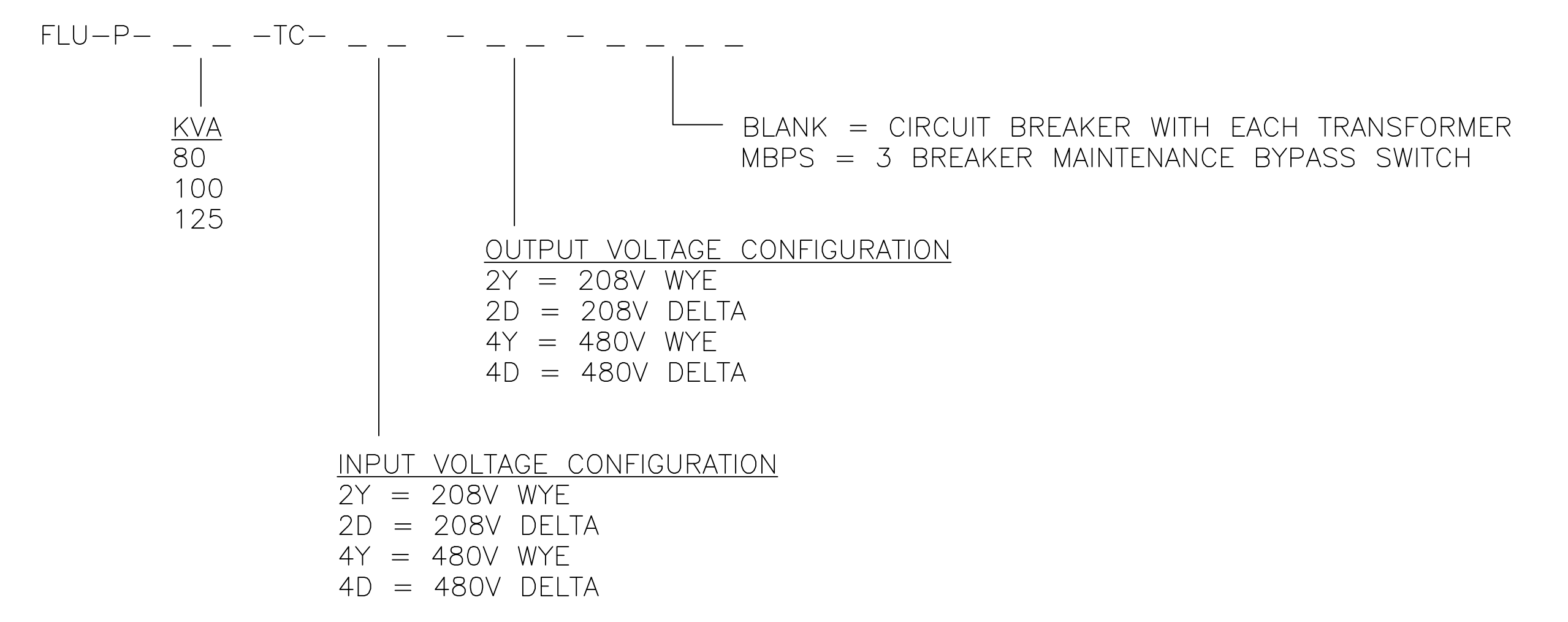


CUSTOMER LOW VOLTAGE CONNECTION TERMINAL BLOCK IN TRANSFORMER CABINET (MAINTENANCE BYPASS SWITCH OPTION ONLY)

FIRSTLINE P UPS TRANSFORMER CABINET MODEL NUMBERING SYSTEM

NOTES:

1. CABINETS WITH 480V DELTA OR WYE INPUT WILL HAVE NO INPUT TRANSFORMER.
2. CABINETS WITHOUT THE MBPS OPTION WILL HAVE ONE BREAKER PER TRANSFORMER.



EXAMPLE:

FLU-P-125-TC-4Y-2Y-MBPS FIRSTLINE P 125KVA TRANSFORMER CABINET WITH (1) 480Y:208Y OUTPUT TRANSFORMER AND MAINTENANCE BYPASS SWITCH.

UNLESS OTHERWISE SPECIFIED, TOLERANCE IS #		UNITS		TITLE: SPEC. CONTROL DRAWING	
DECIMALS	HOLE	ANGLES	DRAFT	FIRST LINE P	
.XX .010	.005	1°	1-1/2°	TRANSFORMER CABINET	
.XXX .005				DRAWN BY: S.A. SMITH	
MATERIAL:				DATE: 3/16/11	
ALL DIMENSIONS APPLY AFTER PLATING				FIRST USED ON:	
The information and design disclosed herein was originated by and is the property of STACO ENERGY PRODUCTS CO., which reserves all patent, proprietary, design, manufacturing, reproduction, use and sale rights therein, and to any article disclosed therein except to the extent rights are expressly granted to others. The foregoing does not apply to vendor proprietary parts.				DO NOT SCALE DWG.	
CHECKER: S.A. SMITH		DATE: 6/10/11		CAGE CODE: 83008	
ENGINEER: R. BAKER		DATE: 6/10/11		WEIGHT APPROX.:	
		SCALE: 1/4		SHEET 2 OF 2	
				DWG. NO. 092-7035	

