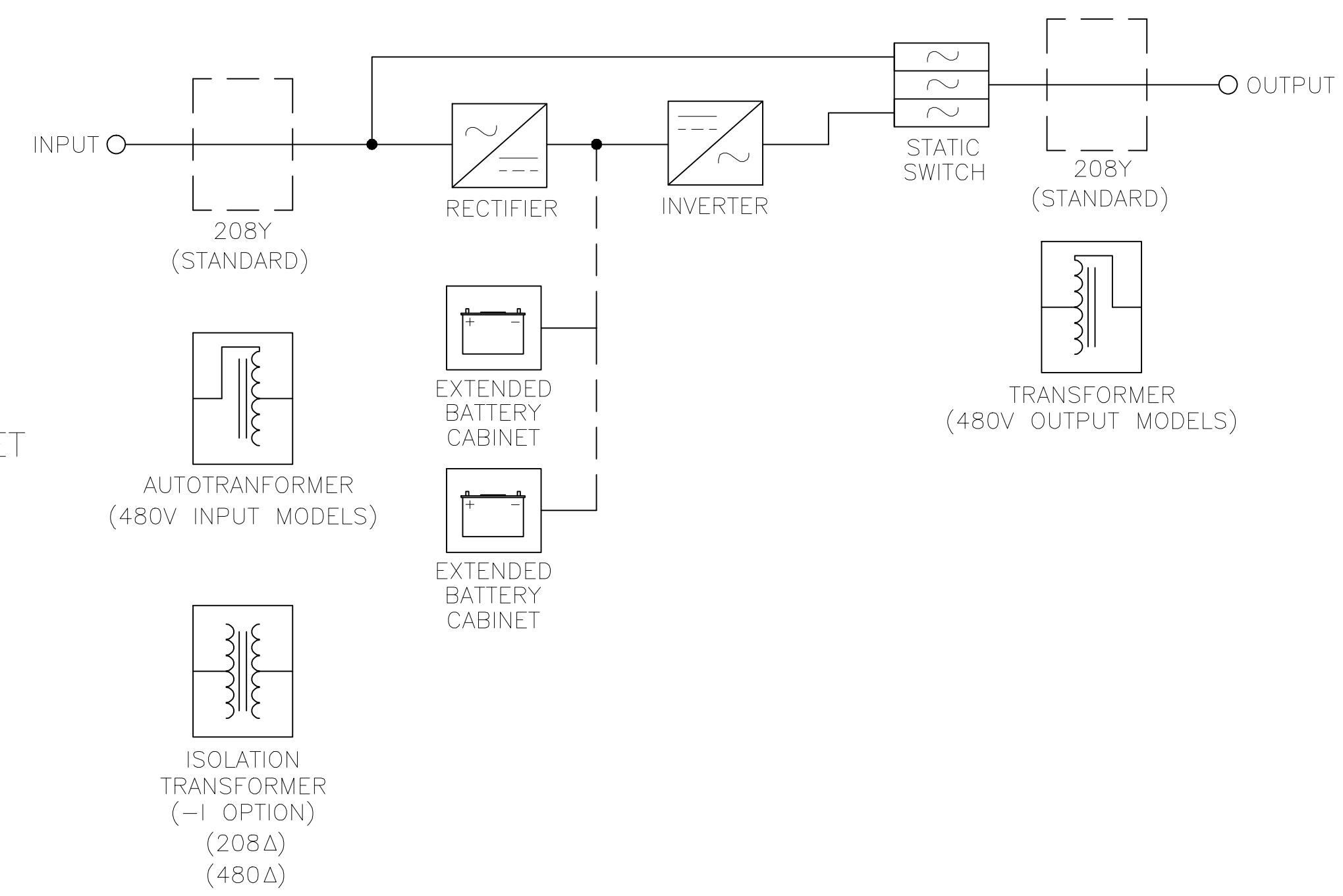
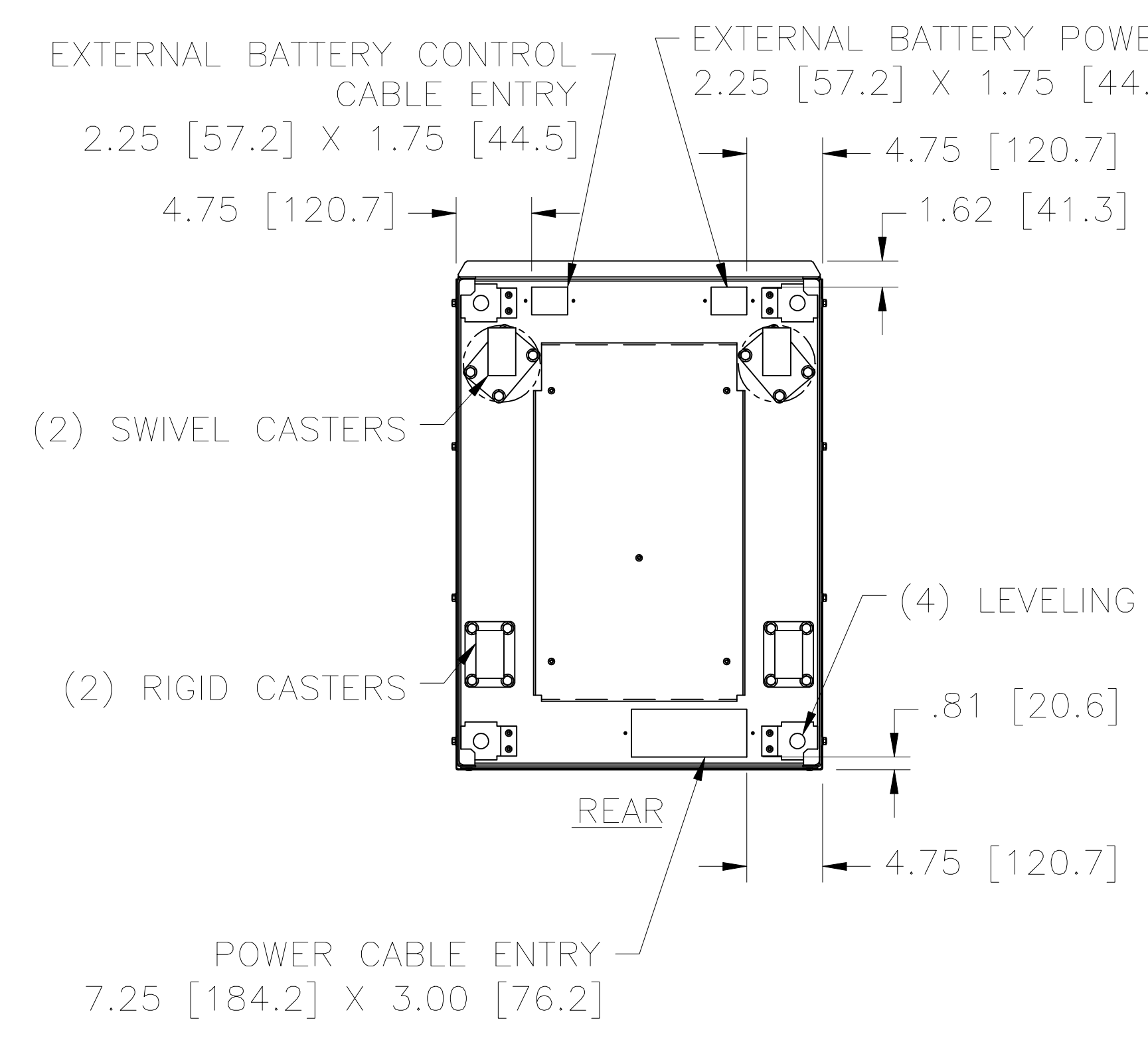


BATTERY AND BATTERY TERMINAL ACCESS



ENVIRONMENTAL
 OPERATING TEMPERATURE: 0°C TO 40°C
 ALTITUDE: 0-3300 FEET [1000 METERS] (WITHOUT DERATING)
 RELATIVE HUMIDITY: 0-95%, NON-CONDENSING

SERVICE CLEARANCES
 FROM SIDE OF UPS CABINET: 24.00 [609.6]
 FROM FRONT OF CABINETS: 36.00 [914.4]

UL LISTED TO UL924, FILE NO.: E191175

- NOTES:**
 1. ADD -1 TO MODEL NUMBER FOR 208V OR 480V DELTA INPUT OPTION.
 2. SEE SHEETS 3 & 4 FOR BATTERY CABINET DIMENSIONS AND WIRING.

FIRSTLINE UPS SPECIFICATIONS							
MODEL	KW	INPUT VOLTAGE (+10%, -20%) 60 HZ	OUTPUT VOLTAGE (±1%) 60 HZ	MAXIMUM INPUT CURRENT (AMPS)	MAXIMUM OUTPUT CURRENT (AMPS)	NUMBER OF BATTERY CABINETS	MINIMUM BATTERY RUN TIME (MINUTES)
FLU924-20-20	20	208Y/120	208Y/120	80	56	2	90
FLU924-20-42	20	480Y/277	208Y/120	40	56	2	90
FLU924-20-44	20	480Y/277	480Y/277	40	24	2	90
FLU924-30-20	30	208Y/120	208Y/120	100	83	2	90
FLU924-30-42	30	480Y/277	208Y/120	48	83	2	90
FLU924-30-44	30	480Y/277	480Y/277	48	36	2	90

UNLESS OTHERWISE SPECIFIED, TOLERANCE IS ±
 DECIMALS HOLES ANGLES DRAFT
 .XX .0006 .005 1° 1-1/2°
 .XXX .005

MATERIAL: ALL DIMENSIONS APPLY AFTER PLATING

UNITS IN [mm]

TITLE: SPECIFICATION CONTROL DRAWING
 FIRSTLINE UL924 20KW-30KW
 EMERGENCY LIGHTING SYSTEM

DO NOT SCALE DWG.

CAGE CODE 83008

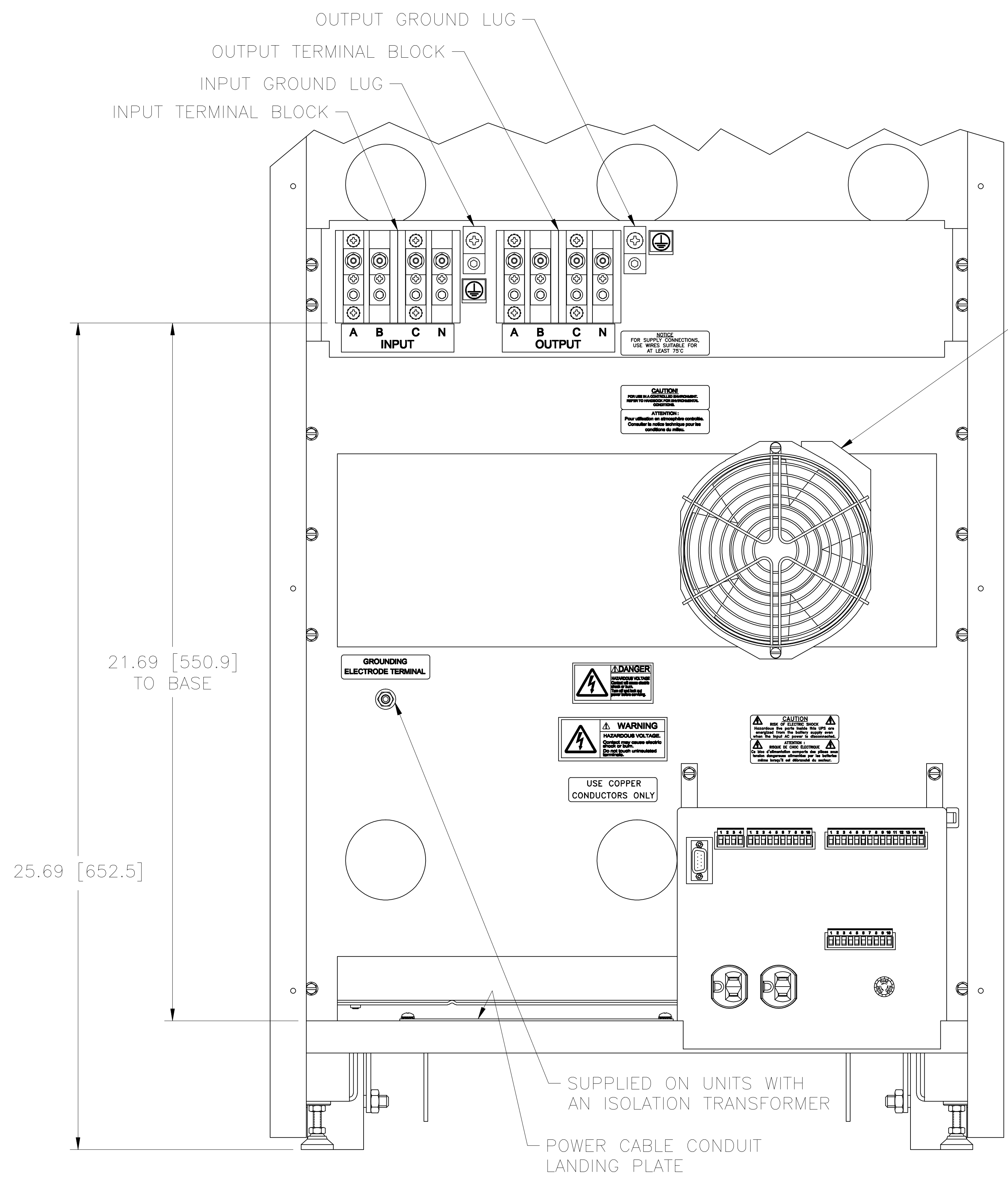
DWG. NO. 096-6008

DRAWN BY S.A. SMITH DATE 8/19/08
 CHECKER SAS DATE 2/17/09
 ENGINEER SAS DATE 2/17/09

WEIGHT APPROX. SCALE 1/8
 SHEET 1 OF 4

STACO ENERGY PRODUCTS CO.
 A Components Corporation of America Company
 301 Cassin Boulevard Dayton, Ohio 45403 USA

POWER CABLE ENTRY
 7.25 [184.2] X 3.00 [76.2]



REAR VIEW
 REAR PANEL REMOVED

WIRE SIZING:

INPUT TERMINAL BLOCK

UPS RATING	VOLTAGE	INPUT TRANSFORMER TYPE	PHASE CONDUCTOR MIN/MAX	NEUTRAL CONDUCTOR MIN/MAX	NEUTRAL CONDUCTOR W/NON-LINEAR LOADS MIN/MAX	GROUND CONDUCTOR MIN/MAX
20 KW	208Y/120	NA	#4/2-0	#4/2-0	#2/2-0	#8/1-0
20 KW	208Δ	ISOLATION	#4/2-0	(NONE)	(NONE)	#8/1-0
20 KW	480Y/277	AUTO	#8/2-0	#8/2-0	#6/2-0	#8/1-0
20 KW	480Δ	ISOLATION	#8/2-0	(NONE)	(NONE)	#8/1-0
30 KW	208Y/120	NA	#3/2-0	#3/2-0	#2/2-0	#6/1-0
30 KW	208Δ	ISOLATION	#3/2-0	(NONE)	(NONE)	#6/1-0
30 KW	480Y/277	AUTO	#8/2-0	#8/2-0	#6/2-0	#6/1-0
30 KW	480Δ	ISOLATION	#8/2-0	(NONE)	(NONE)	#6/1-0

OUTPUT TERMINAL BLOCK

(MINIMUM WIRE SIZE REQUIRED TO SUPPORT RATED LOAD. SMALLER WIRE MAY BE USED IF RATED LOAD CURRENT IS NOT NEEDED AND THE APPROPRIATE CIRCUIT PROTECTION IS APPLIED.)

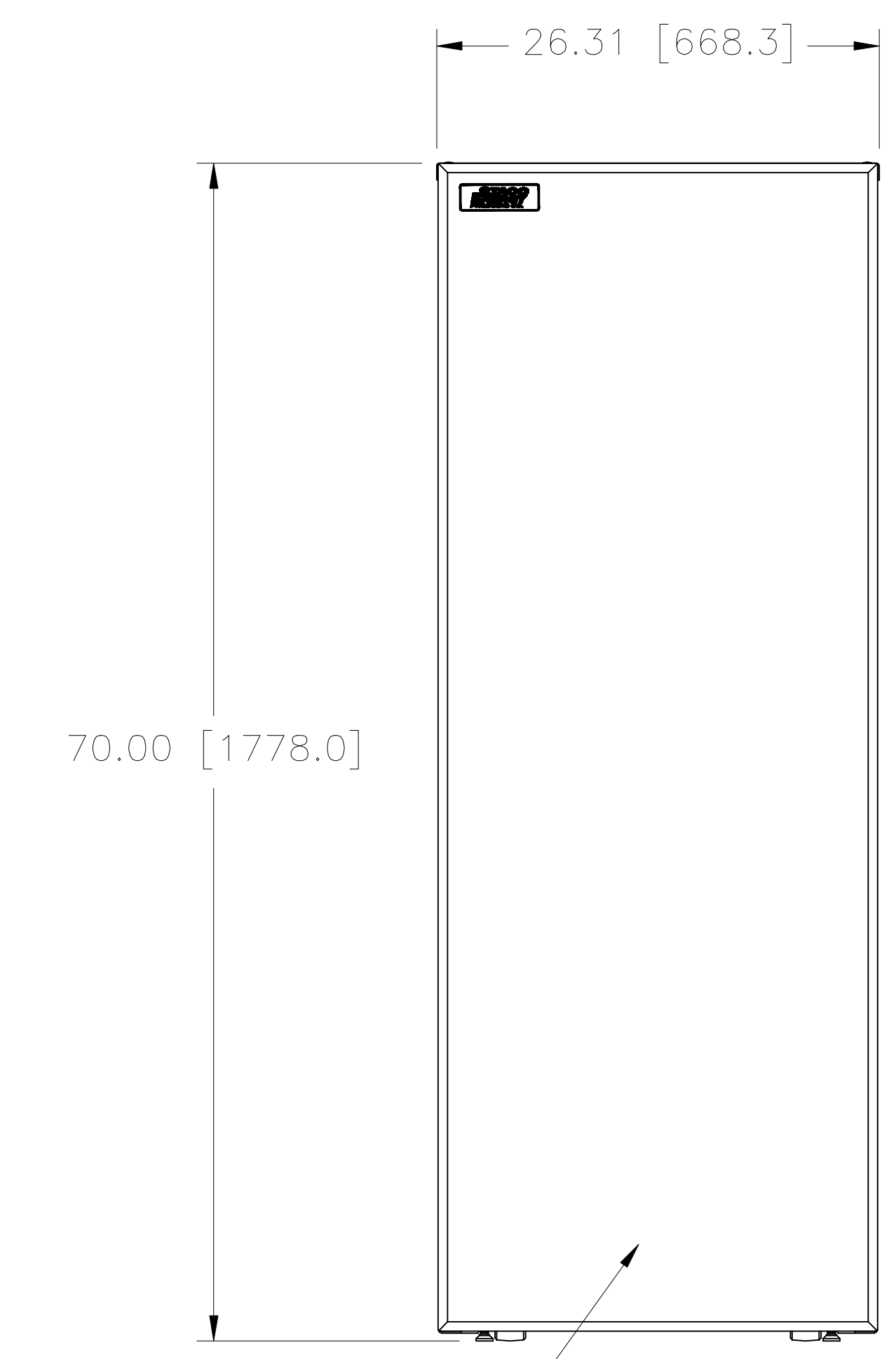
UPS RATING	VOLTAGE	OUTPUT TRANSFORMER	PHASE CONDUCTOR	NEUTRAL CONDUCTOR	NEUTRAL CONDUCTOR W/NON-LINEAR LOADS	GROUND CONDUCTOR
20 KW	208Y/120	NA	#6	#6	#4	#8
20 KW	480Y/277	AUTO	#10	#10	#8	#8
30 KW	208Y/120	NA	#4	#4	#2	#6
30 KW	480Y/277	AUTO	#8	#8	#6	#6

NOTE: NO OUTPUT CIRCUIT PROTECTION IS REQUIRED IF THE OUTPUT CONDUCTOR SIZES ARE AT LEAST AS LARGE AS THE INPUT CONDUCTORS, UNLESS THE UPS IS EQUIPPED WITH AN INPUT ISOLATION TRANSFORMER. IF THE UPS IS EQUIPPED WITH AN INPUT ISOLATION TRANSFORMER, THE UPS IS CONSIDERED A SEPARATELY DERIVED SOURCE AND CIRCUIT PROTECTION FOR THE OUTPUT CONDUCTORS MUST BE PROVIDED.

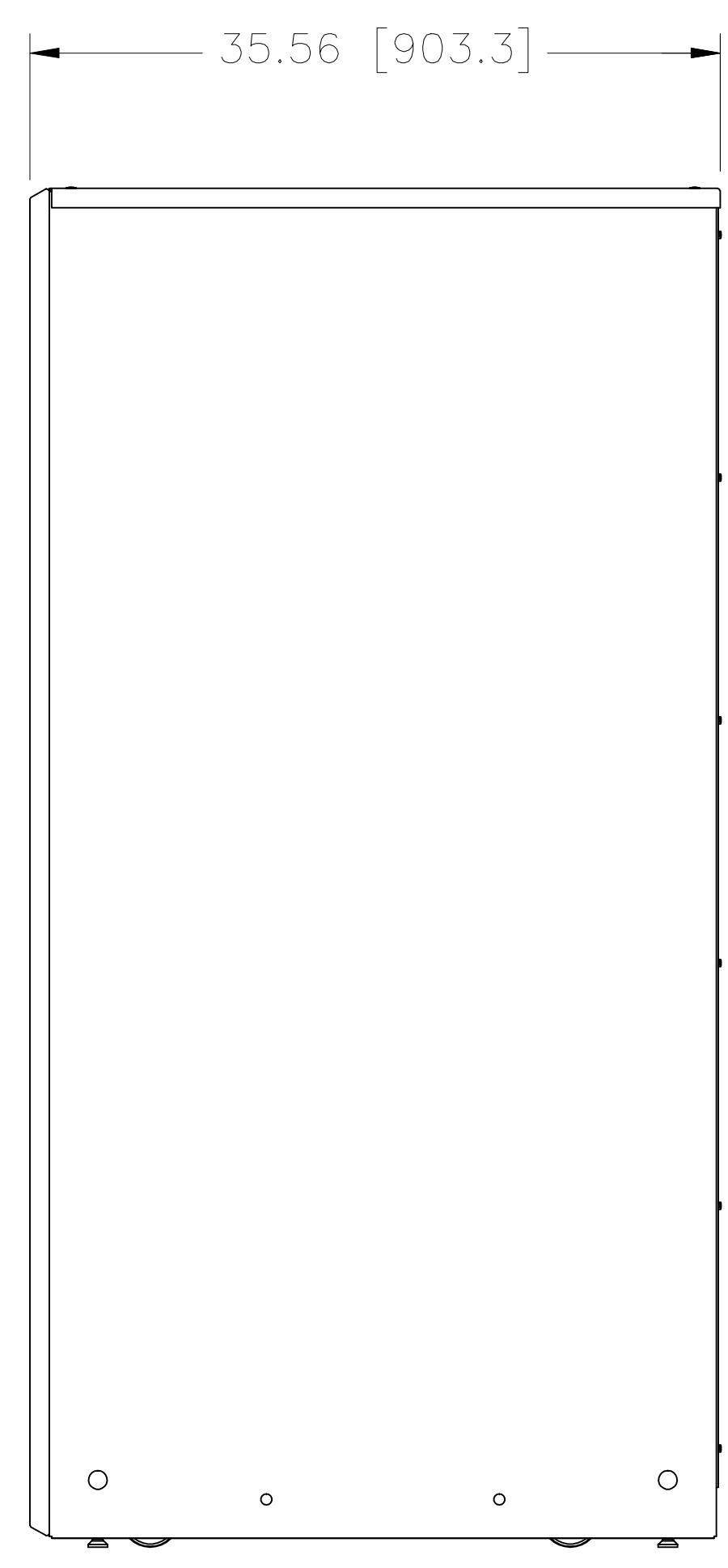
USE AT LEAST 75°C RATED COPPER WIRE. MINIMUM WIRE SIZE IS BASED ON 208Y/120 FULL LOAD RATINGS APPLIED TO NEC CODE TABLE 310-16. CODE MAY REQUIRE A LARGE AWG SIZE THAN SHOWN IN THIS TABLE BECAUSE OF TEMPERATURE, NUMBER OF CONDUCTORS IN THE CONDUIT, OR LONG SERVICE RUNS. FOLLOW LOCAL REQUIREMENTS.

UNLESS OTHERWISE SPECIFIED, TOLERANCE IS ±		UNITS		TITLE	
DECIMALS	HOLES	ANGLES	DRAFT	SPECIFICATION CONTROL DRAWING	
.XX .000 .06 .005	.005	1°	1-1/2°	FIRSTLINE UL924 20KW-30KW	
MATERIAL:		ALL DIMENSIONS APPLY AFTER PLATING		EMERGENCY LIGHTING SYSTEM	
The information and design disclosed herein was originated by and is the property of STACO ENERGY PRODUCTS CO., which reserves all patent, proprietary, design, manufacturing, reproduction, use and sale rights therein, and to any article disclosed therein except to the extent rights are expressly granted to others. The foregoing does not apply to vendor proprietary parts.		CHECKER	DATE	FIRST USED ON	DO NOT SCALE DWG.
S.A. SMITH	8/19/08				
SAS	2/17/09	WEIGHT APPROX.	CAGE CODE	DWG. NO.	
SAS	2/17/09	SCALE 1/2	83008	096-6008	
			SHEET 2 OF 4		

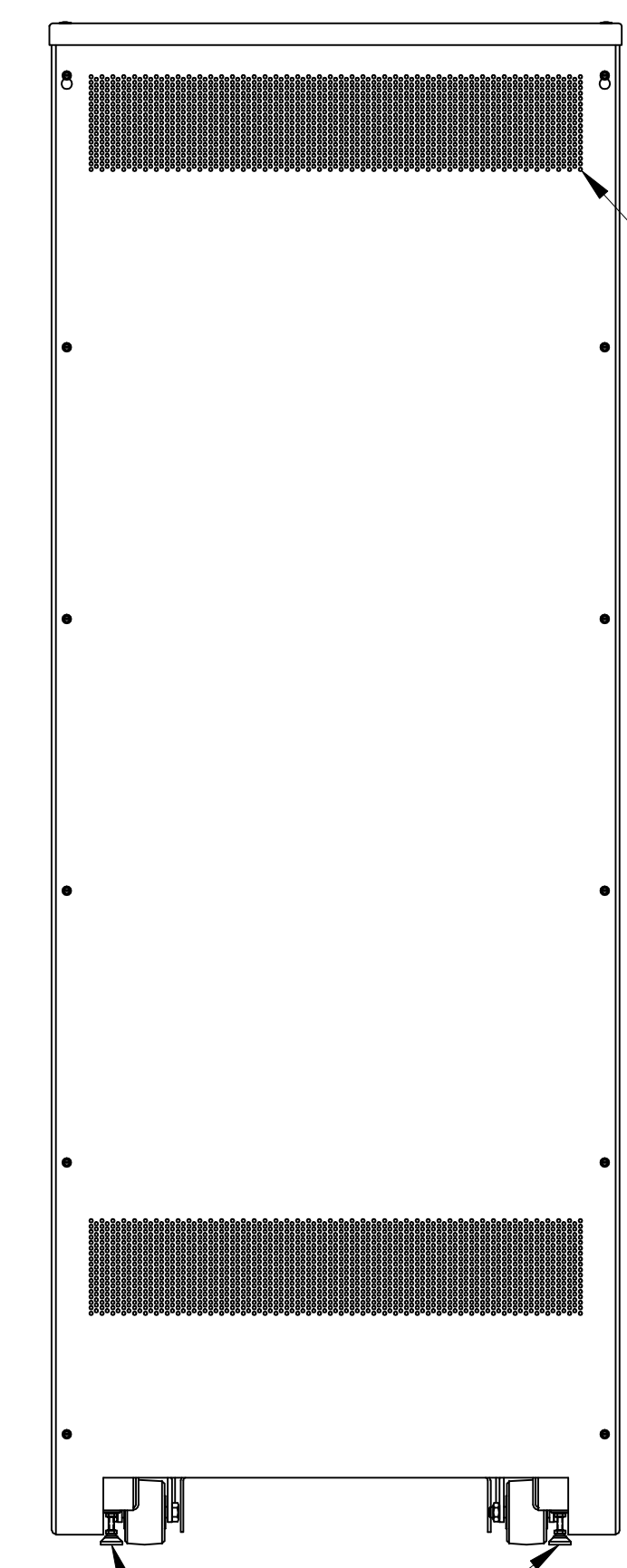




CUSTOMER CONNECTION
TERMINAL ACCESS, FUSES
AND INTERNAL CIRCUIT
BREAKER ON CABINET #1

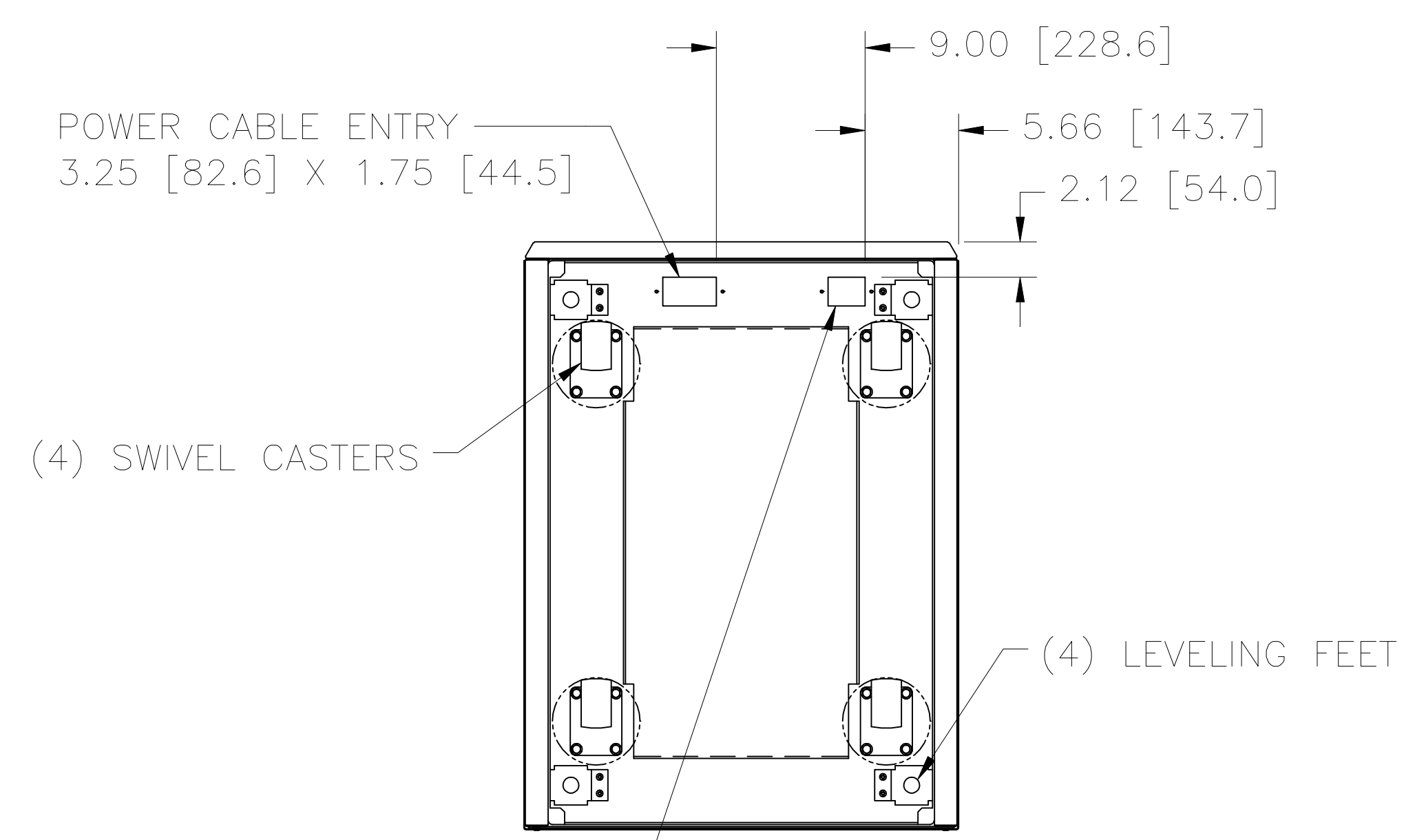


6.00 [152.4] MIN.
WALL CLEARANCE
FOR VENTILATION



VENTILATION HOLES

LEVELING FOOT



POWER CABLE ENTRY
3.25 [82.6] X 1.75 [44.5]

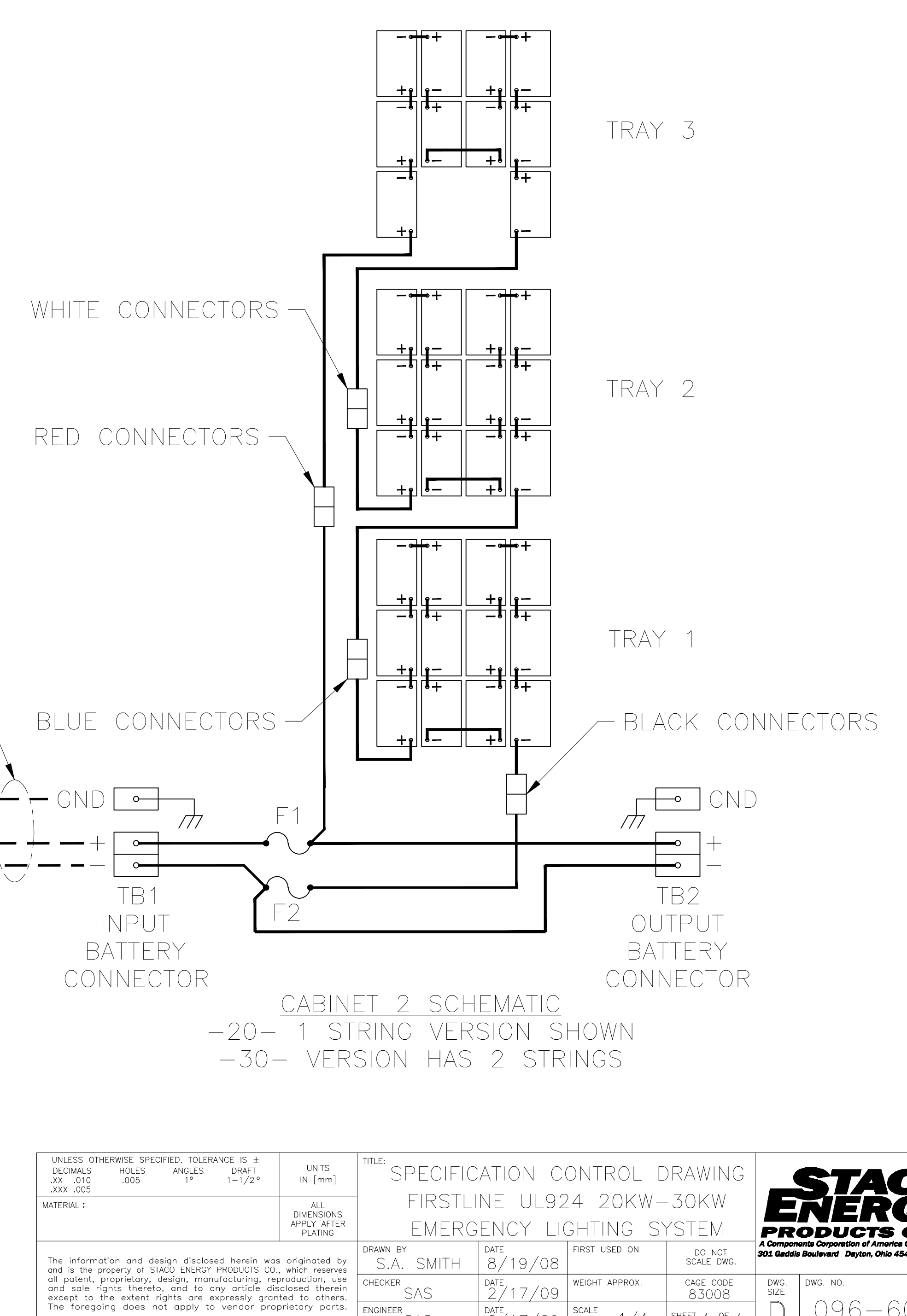
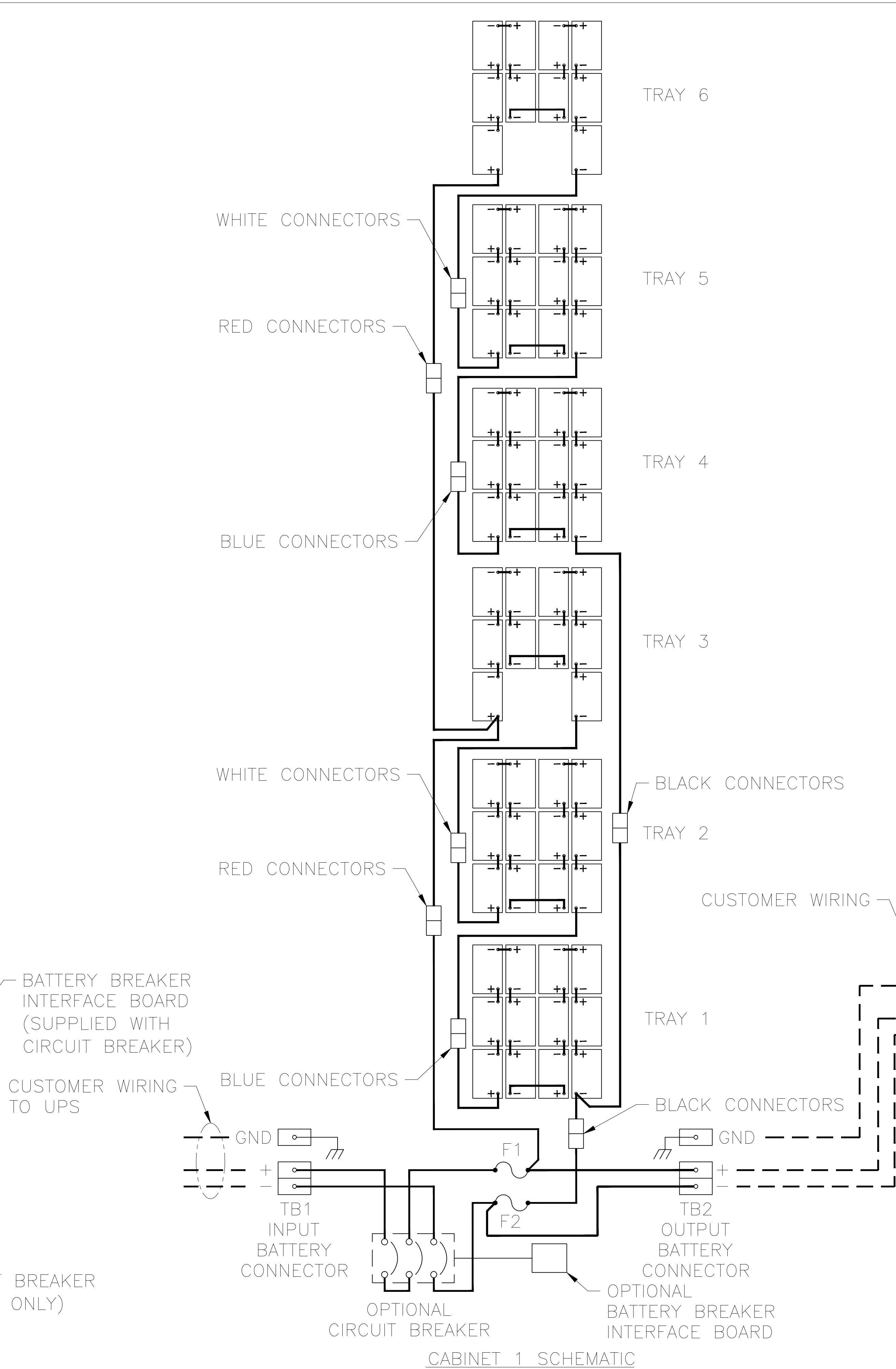
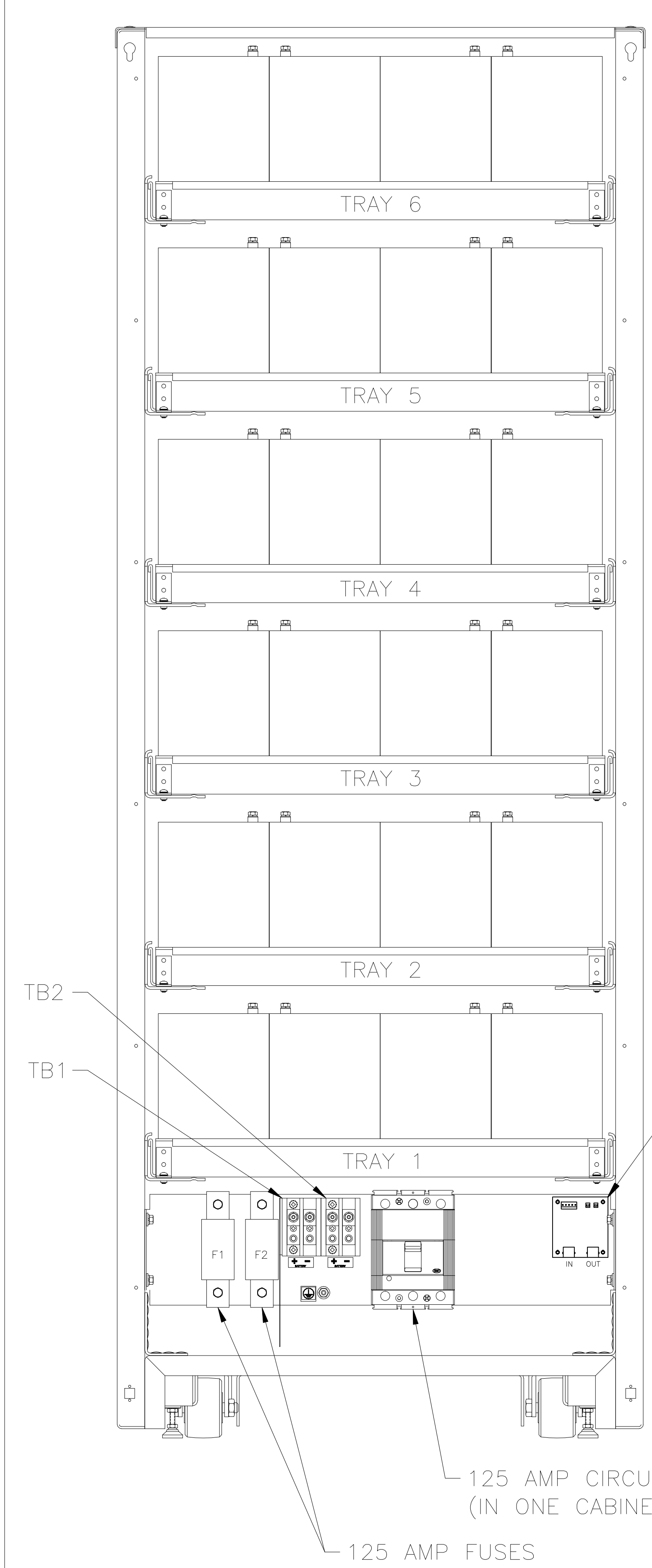
(4) SWIVEL CASTERS

(4) LEVELING FEET

CONTROL CABLE ENTRY
2.25 [57.2] X 1.75 [44.5]

BATTERY CABINETS
2 BATTERY CABINETS PER SYSTEM

UNLESS OTHERWISE SPECIFIED, TOLERANCE IS ±		UNITS		TITLE: SPECIFICATION CONTROL DRAWING				
DECIMALS	HOLES	ANGLES	DRAFT	FIRSTLINE UL924 20KW-30KW				
.XX .010	.005	1°	1-1/2°	EMERGENCY LIGHTING SYSTEM				<small>A Components Corporation of America Company 301 Cassin Boulevard Dayton, Ohio 45403 USA</small>
MATERIAL:		ALL DIMENSIONS APPLY AFTER PLATING		DRAWN BY	DATE	FIRST USED ON	DO NOT SCALE DWG.	DWG. NO.
				S.A. SMITH	8/19/08			096-6008
				CHECKER	DATE	WEIGHT APPROX.	CAGE CODE	DWG. SIZE
				SAS	2/17/09		83008	D
				ENGINEER	DATE	SCALE	SHEET 3 OF 4	
				SAS	2/17/09	1/8		



UNLESS OTHERWISE SPECIFIED, TOLERANCE IS #		TITLE: SPECIFICATION CONTROL DRAWING		
DECIMALS	HOLE	ANGLES	DRAFT	
.XX	.010	.005	1-1/2°	CAGE CODE 83008
.XXX	.005			DWG. NO. 096-6008
MATERIAL:		DRAWN BY S.A. SMITH		DATE 8/19/08
ALL DIMENSIONS APPLY AFTER PLATING		CHECKER SAS		DATE 2/17/09
The information and design disclosed herein was originated by and is the property of STACO ENERGY PRODUCTS CO., which reserves all patent, proprietary, design, manufacturing, reproduction, use and sale rights therein, and to any article disclosed therein except to the extent rights are expressly granted to others. The foregoing does not apply to vendor proprietary parts.		ENGINEER SAS		DATE 2/17/09
		WEIGHT APPROX.		SCALE 1/4
		SHEET 4 OF 4		