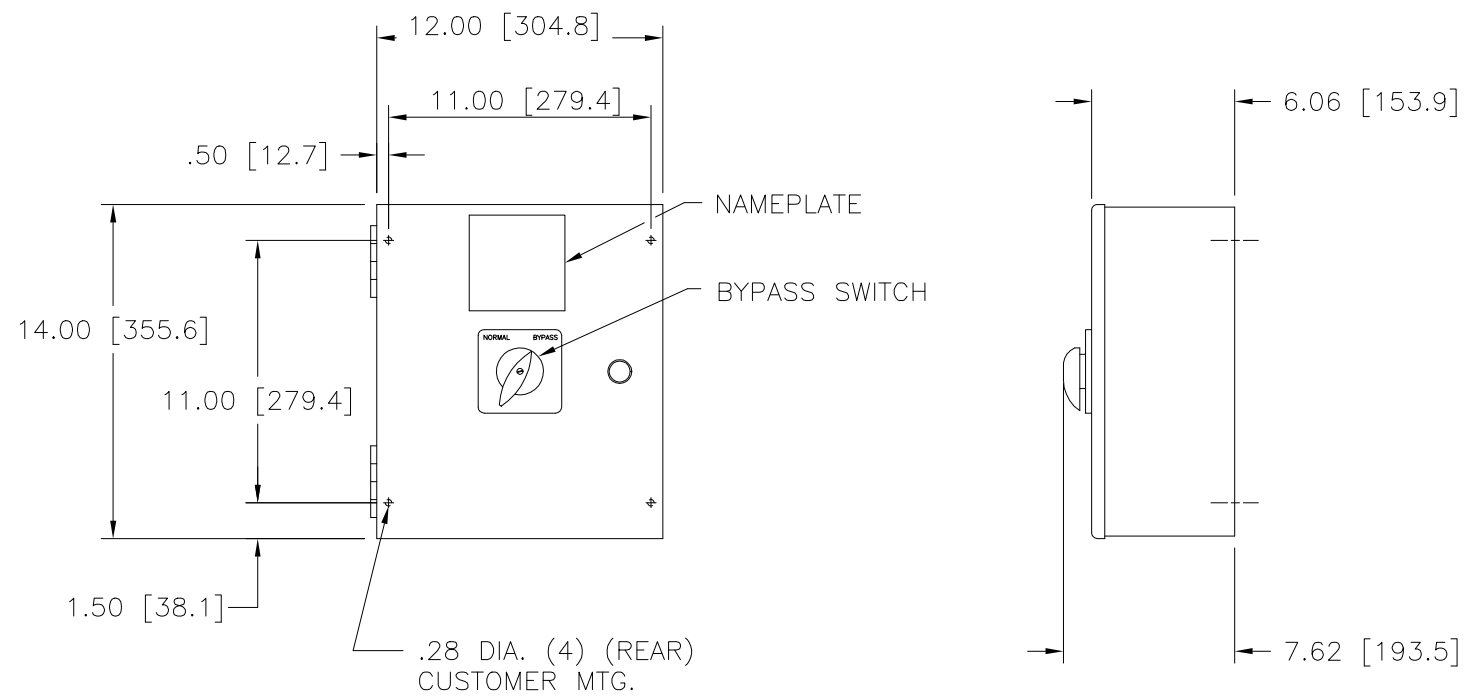


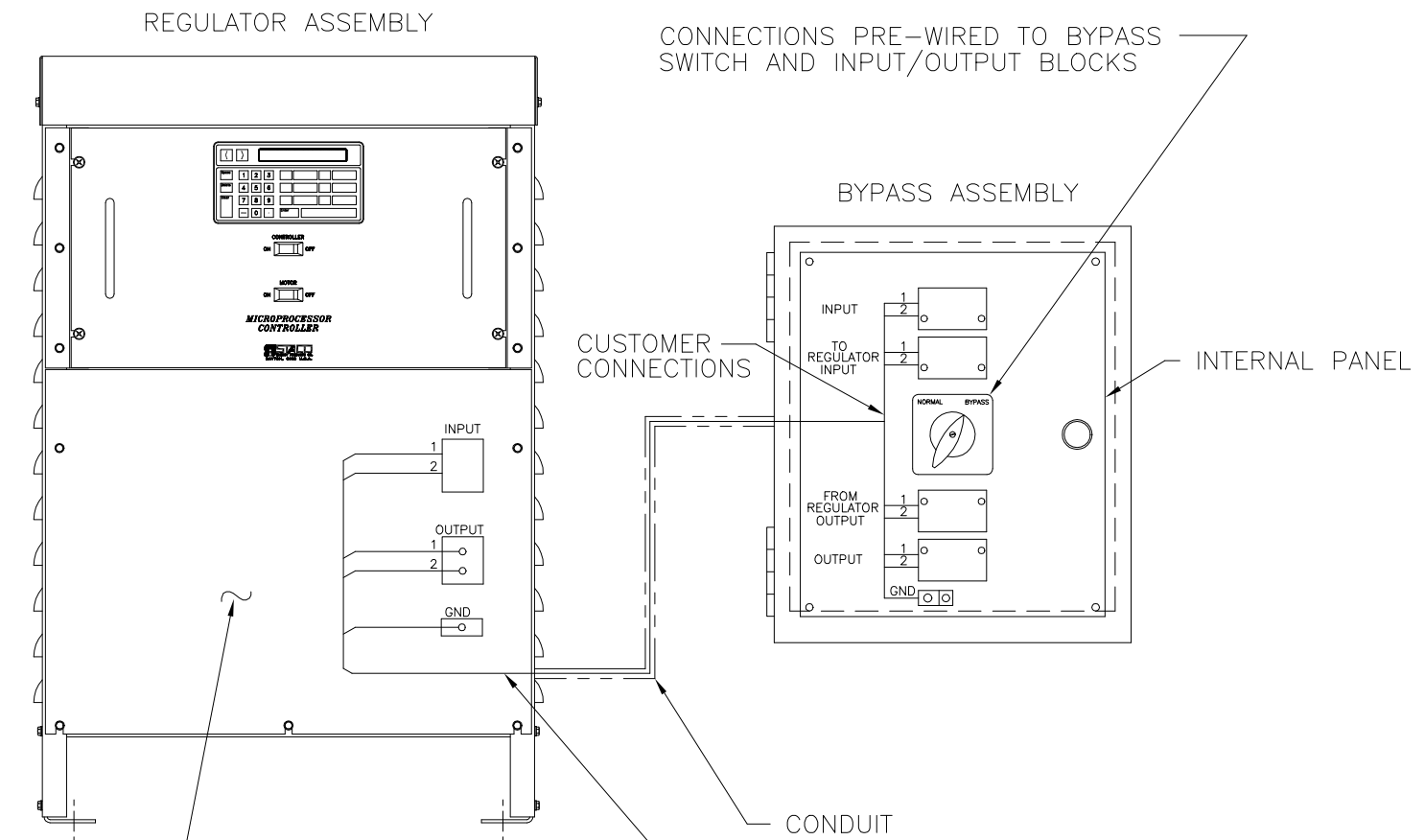
BYPASS SWITCH: WHEN THIS SWITCH IS PLACED IN THE "BYPASS" POSITION, THE INCOMING LINE IS CONNECTED DIRECTLY TO THE OUTGOING LINE AND THE REGULATOR IS REMOVED FROM THE CIRCUIT. IN THE "NORMAL" POSITION, THE REGULATOR WILL CORRECT FOR HIGH OR LOW SUPPLY LINE VOLTAGES WHILE MAINTAINING A CONSTANT PRESET OUTPUT VOLTAGE.

WARNING !
DO NOT OPERATE THE SWITCH UNDER LOAD OR THE SWITCH MAY BE DAMAGED.



WIRE RANGES FOR CUSTOMER WIRING

INPUT/OUTPUT TERMINALS: (1)(#2-#14 AWG) COMPRESSION PER POLE
 TO/FROM REGULATOR TERMINALS: (1)(#2-#14 AWG) COMPRESSION PER POLE
 GROUND TERMINAL: (1)(#2-#14 AWG) COMPRESSION



NO SCALE

BYPASS SWITCH RATINGS			
SINGLE PHASE WIRING	50/60 HERTZ	600 VOLTS	100 AMPS
UNLESS OTHERWISE SPECIFIED, TOLERANCE IS * DECIMALS .005 Holes .002 ANGLES 1° DRAFT 1-1/2°	UNITS IN [mm]	TITLE: SPEC. CONTROL DRAWING MAINT. BYPASS SWITCH TYPE: MB-S100	
MATERIAL:	ALL DIMENSIONS APPLY AFTER PLATING	DRAWN BY: TIM RAU	DATE: 9/22/98
The information and design disclosed herein was originated by and is the property of STACO ENERGY PRODUCTS CO., which reserves all patent, proprietary, design, manufacturing, reproduction, use and sale rights thereto, and to any article disclosed therein except to the extent rights are expressly granted to others. The foregoing does not apply to vendor proprietary parts.		CHECKER:	DATE:
		ENGINEER:	DATE:
		FIRST USED ON: MS-S100	DO NOT SCALE DWG.
		CHECKER APPROX. WEIGHT:	CODE IDENT. NO. 83008
		SCALE: .25=1	SHEET 1 OF 1
		CUSTOMER APPROVAL:	DATE:
		DWG. NO. 810-0042	DWG. SIZE D

